

FOX HOLLOW

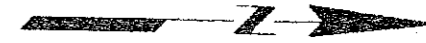
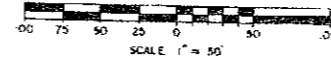
A PLAT OF A PORTION OF SECTION 24, TOWNSHIP 46 SOUTH, RANGE 42 EAST
CITY OF DELRAY BEACH, PALM BEACH COUNTY, FLORIDA

JOHN A. GRANT, JR., INC.

CONSULTING ENGINEERS AND LAND SURVEYORS

BOCA RATON, FLORIDA

NOVEMBER 1983
SHEET 2 OF 2



NOTES

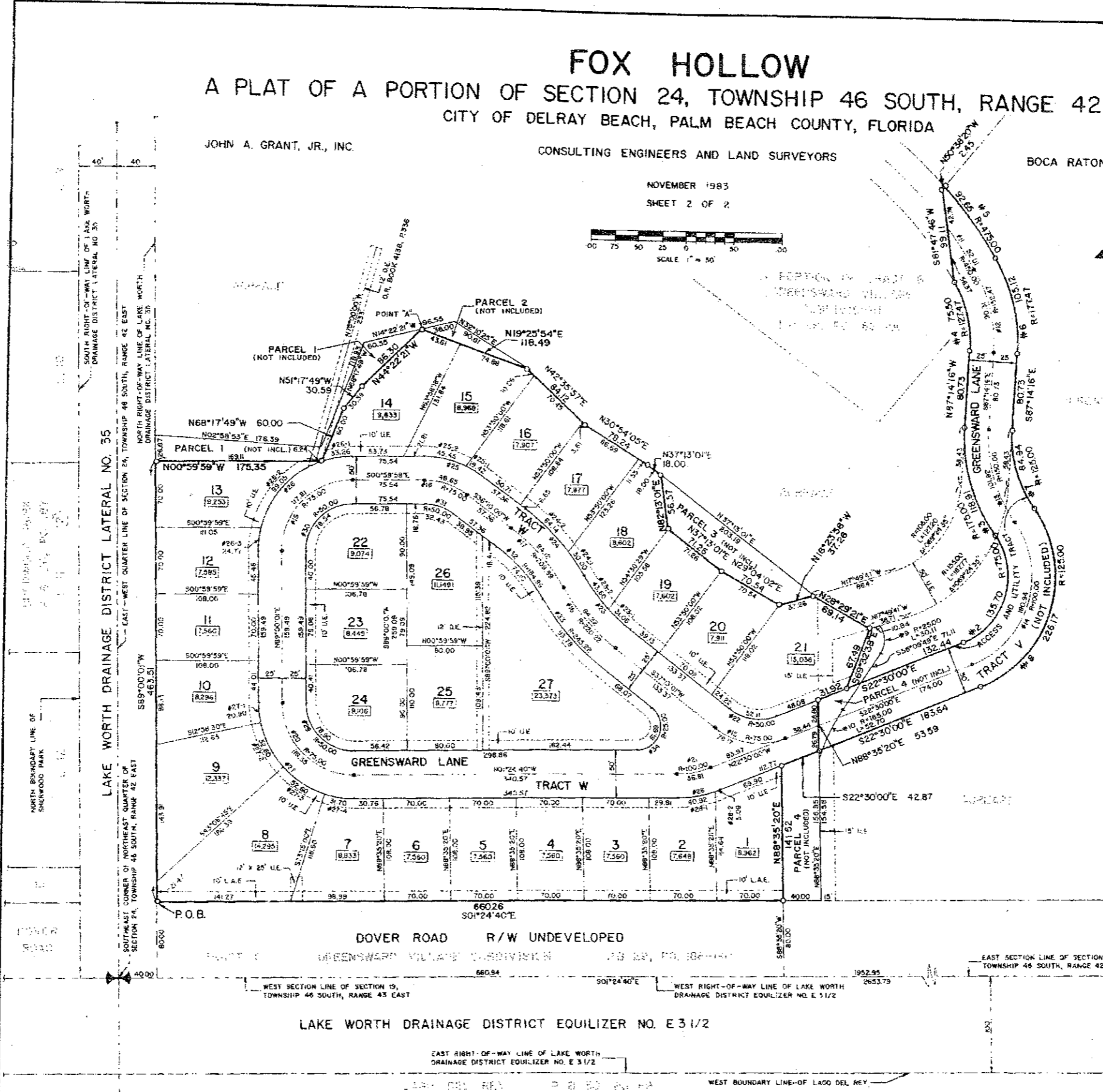
Bearings shown herein are based on a bearing of S0°29'40"E along the East line of the Northeast Quarter of Section 24, Township 46 South, Range 42 East of Palm Beach County, Florida.

No structure, trees or shrubs shall be placed on water, sewer and drainage easements.

Approval of landscaping on utility easements, other than water and sewer, shall be only with the approval of all utilities occupying same.

P.R.M. Indicates Permanent Reference Monument
P.C.P. Indicates Permanent Control Point
U.E. Indicates Utility Easement
D.E. Indicates Drainage Easement
L.A.E. Indicates Limited Access Easement

See other drawings as shown on this plat for details.



NUMBER	RAD. VS.	SPC.	DELTA	TANGENT	CHORD	BEAR. ANG.
1	70.00	130.70	03°40'09"	98.42	187.93	N74°20'04"W
2	70.00	119.51	038°55'53"	61.55	186.64	S73°17'48"W
3	127.47	75.50	033°56'14"	38.89	75.40	S75°47'37"W
4	475.00	92.95	0°17'03"	46.47	30.50	N53°14'15"E
5	177.47	102.12	033°56'14"	54.15	103.58	N75°27'37"E
6	125.00	84.94	038°55'53"	44.18	83.33	N75°17'48"E
7	125.00	225.17	03°40'09"	159.04	195.00	S74°20'04"E
8	25.00	30.11	068°00'29"	17.18	28.52	N69°19'56"E
9	185.00	58.70	016°19'22"	26.33	52.53	S68°19'30"E
10	480.00	52.01	006°37'21"	26.03	52.98	N65°30'51"E
11	32.47	80.31	033°56'14"	46.47	30.50	N75°27'37"E
12	50.00	101.92	038°55'53"	48.52	89.00	N75°17'48"E
13	120.00	180.94	03°40'09"	55.02	186.97	N73°17'48"E
14	75.00	78.77	059°43'31"	43.05	75.58	S07°24'31"W
15	220.22	84.22	051°24'46"	42.83	83.77	S48°10'24"W
16	209.89	84.12	022°57'47"	42.83	83.58	S47°39'54"W
17	75.00	46.65	037°09'59"	25.22	47.80	S11°35'01"W
18	75.00	117.81	090°00'00"	75.00	106.07	S45°59'59"E
19	75.00	117.81	090°00'00"	75.00	106.07	S45°59'59"E
20	90.00	26.87	02°10'28"	18.51	36.60	N11°57'20"W
21	50.00	52.11	059°43'31"	29.70	49.19	S07°24'31"W
22	95.22	74.68	021°54'46"	37.79	76.27	S48°10'24"W
23-1	4.06	009°06'53"	15.56	5.09	34.46	S41°46'20"W
23-2	43.50	0°2'47'53"	21.89	45.52	52.43	S52°43'8"W
24	234.89	94.14	022°57'47"	47.71	83.55	S47°39'54"W
24-2	30.00	007°19'01"	15.09	29.98	35.28	S7°24'31"W
25	60.26	64.14	013°58'46"	32.27	63.84	S43°39'23"W
25-1	60.26	64.07	037°09'59"	33.67	63.74	S17°55'01"W
25-2	45.45	45.45	028°02'31"	23.17	43.06	S11°35'01"W
26	60.00	127.08	090°00'00"	100.00	14.42	S07°59'59"E
26-1	33.26	0°30'32"	6.79	33.11	31.01	S10°31'42"E
26-2	98.00	056°44'58"	34.01	95.00	548°25'55"E	
27	100.00	24.77	014°11'35"	2.45	24.77	S85°24'11"E
27-1	27.80	090°24'4"	100.72	4.93	N43°47'11"E	
27-2	22.90	011°58'31"	10.49	23.86	N83°00'46"E	
27-3	52.60	030°26'15"	26.92	52.00	N6°27'32"E	
27-4	52.60	030°08'15"	26.92	52.00	N31°49'08"E	
28	125.00	51.70	018°09'40"	15.96	31.06	N07°40'10"E
28-1	40.97	46.01	021°00'20"	23.27	45.75	N1°57'20"W
28-2	40.97	018°52'28"	20.65	40.14	N10°47'23"W	
29	50.00	5.09	007°19'01"	2.54	5.09	N2°20'03"W
30	50.00	78.90	090°24'41"	50.36	70.96	S43°47'41"W
31	50.00	78.94	030°00'00"	50.00	70.97	N45°59'59"W
32	184.89	32.43	037°09'59"	16.67	31.87	N17°39'01"E
33	245.22	23.78	021°54'46"	47.47	93.21	N48°10'24"E
34	25.00	6.68	141°22'19"	71.33	47.29	S72°05'49"E

This instrument was prepared by
John A. Grant, Jr., John A. Grant, Jr., Inc.
3333 North Federal Highway, Boca Raton, Florida 33431